

## PCB Mount SPD Socket for AC Systems

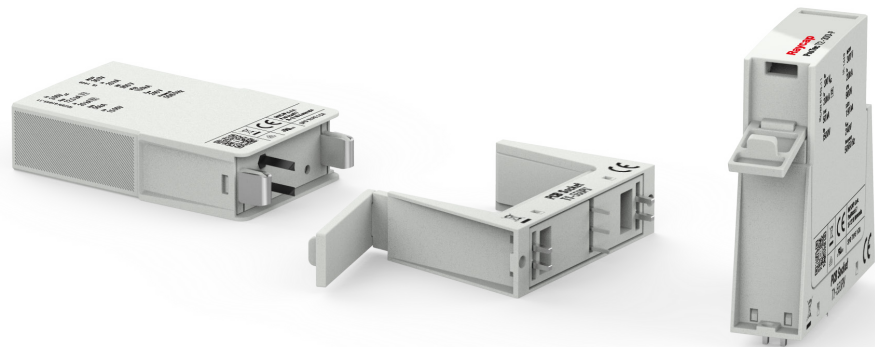


Lightning and Overvoltage Protection

### PCB Socket T1 & PCB Socket T2

#### Special features:

- For use with maximum continuous operating voltage ( $U_c$ ) up to 880V modules
- Dual sets of two soldering pads for mechanical soldering
- Two additional mechanical fixation holes
- Voltage indicator socket
- Module locking mechanism
- Vibration and shock withstand capability
- Sensitive and reliable remote signaling contacts
- Fault indicator, green-no green
- Compact profile for printed circuit board (PCB) mounting



IEC 61643-11:2011

EN 61643-11:2012+A11:2018

UL 1449 5th Edition



Raycap has developed the series of socket bases as an on-board printed circuit board (PCB) solution to optimally protect electronic equipment with efficient surge protection while keeping cost for installation down. With the constant demand for increased reliability of power systems, electronics manufacturers expect comprehensive turnkey solutions that are ready to be installed, but are effectively designed with optimum functionality. The key benefits of the PCB Socket Series are cost and space efficiency, elimination of manufacturing lead times, and maximum equipment protection ensured.

**DATA SHEET**

# Single-pole PCB Mount SPD Socket for AC System

## PCB Socket T2(-R)

### Class II • Type 2 • Type 1CA



Location of Use: Indoor - to be firmly fixed to PCB  
 Network Systems: TN, TT  
 Mode of Protection: L-PE, N-PE, L-PEN  
 IEC/EN/UL Category: Class II, Type 2, Type 1CA  
 Housing: PCB Mount  
 Compliance: IEC 61643-11:2011  
 EN 61643-11:2012+A11:2018  
 UL 1449 5th Edition

**Technical Data****PCB Socket T2(-R)****IEC Electrical**

Nominal AC Voltage (50/60 Hz)	$U_o / U_n$	up to 600V
Maximum Continuous Operating Voltage (AC)	$U_c$	up to 880V
Nominal Discharge Current (8/20 $\mu$ s)	$I_n$	up to 40 kA
Maximum Discharge Current (8/20 $\mu$ s)	$I_{max}$	up to 65 kA
Overcurrent Protection (max)		up to 250 A gG
Short-Circuit Current Rating	$I_{SCCR}$	up to 50 kA
Number of Ports		1

**UL Electrical**

Maximum Continuous Operating Voltage (AC)	MCOV	up to 880V
Nominal Discharge Current (8/20 $\mu$ s)	$I_n$	up to 20 kA
Short-Circuit Current Rating (AC)	SCCR	up to 200 kA

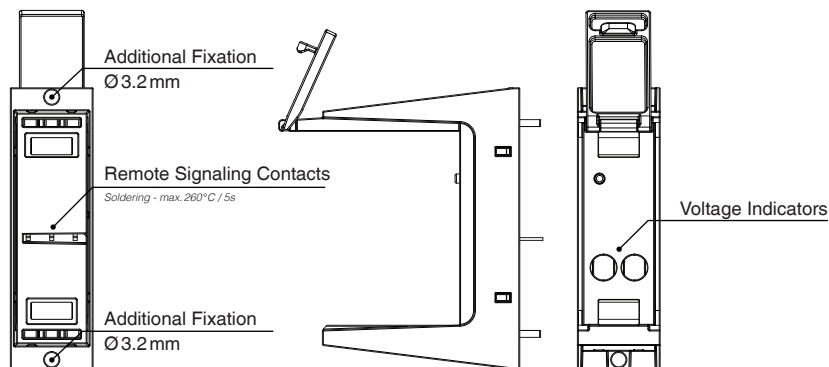
**Mechanical & Environmental**

Operating Temperature Range	$T_a$	-40 °F to +185 °F [-40 °C to +85 °C]
Permissible Operating Humidity	RH	5%...95%
Altitude (max)		13123 ft [4000m]
Mounting		Printed Circuit Board (PCB)
Degree Of Protection		IP 20 (built-in PCB, with protection module plugged in)
Housing Material		Thermoplastic: Extinguishing Degree UL 94 V-0
Remote Contacts (RC)		Optional
RC Switching Capacity		AC: 250V/1A, 125V/1A; DC: 48V/0.5A, 24V/0.5A, 12V/0.5A

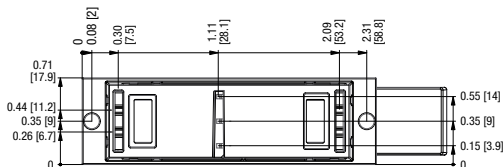
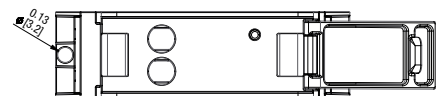
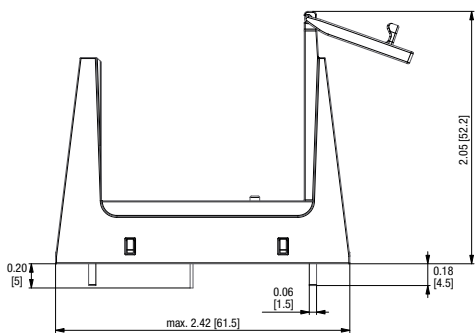
For complete line of Raycap product solutions or dedicated case applications please contact us: [info@raycap.com](mailto:info@raycap.com).

## PCB Socket T2(-R)

### Installation Configuration



### Complete Unit



### Single Unit Dimensions & Packaging

#### PCB Socket T2

Weight	pounds	.044
	grams	20g

#### PCB Socket T2-R

Weight	pounds	.046
	grams	21g

DIN 43880 Dimension	1 TE / .71" [18]
Packaging Dimensions (H x W x L)	14.8 x 2.8 x 2.6" [37.5 x 7 x 6.5mm]
Standard Order Quantity	1 Unit

inches  
[mm]

Information contained in this document is subject to change at any time without notice.

