

**Overvoltage Protection**  
**SafeTube T2 40 0+1**  
**Class II • Type 2 • Type 1CA**



Location of Use: Sub-Distribution Boards  
 Network Systems: TT, TN-S  
 Mode of Protection: N-PE  
 IEC/EN/UL Category: Class II / Type 2 / Type 1CA  
 Housing: Pluggable Design  
 Compliance: IEC 61643-11:2011  
 EN 61643-11:2012  
 UL 1449 4<sup>th</sup> Edition

**Technical Data**

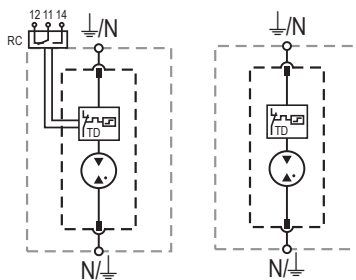
SafeTube T2-xx 0+1(-R)		<b>40</b>
<b>IEC Electrical</b>		
Maximum Continuous Operating Voltage	$U_c$	305V
Nominal Discharge Current (8/20 $\mu$ s)	$I_n$	40kA
Maximum Discharge Current (8/20 $\mu$ s)	$I_{max}$	65kA
Voltage Protection Level	$U_p$	1500V
Follow Current Interrupt Rating	$I_{fi}$	100 A <sub>RMS</sub>
Response Time	$t_A$	< 100 ns
TOV Withstand 200ms	$U_T$	1200V
Number of Ports		1
<b>UL Electrical</b>		
Maximum Continuous Operating Voltage (AC)	MCOV	305V
Voltage Protection Rating(N)	VPR	1000V
Nominal Discharge Current (8/20 $\mu$ s)	$I_n$	20kA
<b>Mechanical &amp; Environmental</b>		
Operating Temperature Range	$T_a$	-40 °F to +185 °F [-40 °C to +85 °C]
Permissible Operating Humidity	RH	5%...95%
Altitude (max)		13123 ft [4000m]
Terminal Screw Torque	$M_{max}$	39.9 lbf-in [4.5Nm]
Conductor Cross Section (max)		2 AWG (Solid, Stranded) / 4 AWG (Flexible) 35 mm <sup>2</sup> (Solid, Stranded) / 25 mm <sup>2</sup> (Flexible)
Mounting		35 mm DIN Rail, EN 60715
Degree of Protection		IP 20 (built-in)
Housing Material		Thermoplastic: Extinguishing Degree UL 94 V-0
Thermal Protection		Yes
Operating State / Fault Indication		Green Flag / Not Green Flag
Remote Contacts (RC)		Optional
RC Switching Capacity		AC: 250V / 1A, 125V / 1A; DC: 48V / 0.5A, 24V / 0.5A, 12V / 0.5A
RC Conductor Cross Section (max)		16 AWG (Solid) / 1.5mm <sup>2</sup> (Solid)
<b>Order Information</b>		
Order Code		<b>40</b>
SafeTube T2-xxx-0+1		59.0281
SafeTube T2-xxx-0+1-R (with remote contacts)		59.0337
SafeTube T2-40-P (plug)		59.0274

## SafeTube T2 0+1

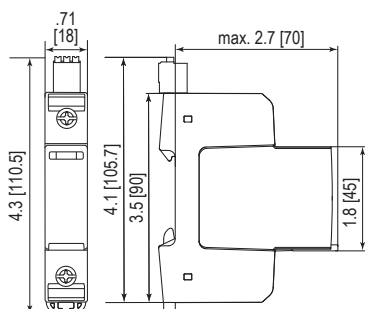
### Internal Configuration

#### Legend

- N Neutral Conductor Terminal
- ⏏ PE/G Conductor Terminal
- RC Remote Contacts Terminal (Optional)
- TC Thermal Control Function
- TD Thermal Disconnect



### Complete Unit

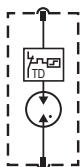


#### Complete Unit Dimensions & Packaging

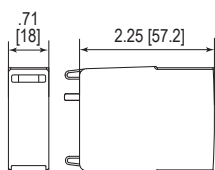
<b>SafeTube T2-xxx-0+1</b>	<b>40</b>
Weight	pounds .244
	grams 111
<b>SafeTube T2-xxx-0+1-R</b>	
Weight	pounds .259
	grams 118
DIN 43880 Dimension	1 TE / .71" [18]
Packaging Dimensions (HxWxL)	4.3 x 4.5 x 13.8" [109 x 115 x 352 mm]
Standard Order Quantity	12 Units

### Plug Internal Configuration

#### SafeTube T2-xxx-P



### Spare Plug



#### Single Unit Dimensions & Packaging

<b>SafeTube T2-40-P</b>	<b>40</b>
Weight	pounds .093
	grams 42
DIN 43880 Dimension	1 TE / .71" [18]
Packaging Dimensions (HxWxL)	3.2 x 4.5 x 12" [83 x 115 x 305 mm]
Standard Order Quantity	24 Units

inches  
[mm]

Information contained in this document is subject to change at any time without notice.

