

Overvoltage Protection
SafeTec T2 4+0
Class II • Type 2 • Type 1CA



Location of Use: Sub-distribution Boards
 Network Systems: TN-S
 Mode of Protection: L-PE, N-PE
 IEC/EN/UL Category: Class II / Type 2 / Type 1CA
 Safety: Patented Current Limiting Technology
 Housing: Pluggable Design
 Compliance: IEC 61643-11:2011
 EN 61643-11:2012
 UL 1449 4th Edition

Technical Data

SafeTec T2-xxx-4+0(-R)	150	300	350	480	550
------------------------	-----	-----	-----	-----	-----

IEC Electrical						
Nominal AC Voltage (50/60Hz)	U_o/U_n	120V	240V	277V	400V	400V
Maximum Continuous Operating Voltage (AC)	U_c	150V	300V	350V	480V	550V
Nominal Discharge Current (8/20 μ s)	I_n	20kA	20kA	20kA	20kA	20kA
Maximum Discharge Current (8/20 μ s)	I_{max}	50kA	50kA	50kA	50kA	50kA
Voltage Protection Level	U_p	1250V	1650V	1750V	2300V	2500V
Response Time	t_A	< 25 ns				
Overcurrent Protection (max)		315 A/250 A gG				
Short-Circuit Current Rating (AC)	I_{SCCR}	25kA/50kA				
TOV Withstand 120min	U_T	255V	442V	529V	762V	918V
Number of Ports		1				

UL Electrical						
Maximum Continuous Operating Voltage (AC)	MCOV	150V	300V	350V	480V	550V
Voltage Protection Rating	VPR	700V	1200V	1200V	1500V	1800V
Nominal Discharge Current (8/20 μ s)	I_n	20kA	20kA	20kA	20kA	20kA
Short-Circuit Current Rating (AC)	SCCR	200kA	150kA	200kA	200kA	200kA

Mechanical & Environmental						
Operating Temperature Range	T_a	-40 °F to +185 °F [-40 °C to +85 °C]				
Permissible Operating Humidity	RH	5%...95%				
Altitude (max)		13123 ft [4000m]				
Terminal Screw Torque	M_{max}	39.9 lbf-in [4.5Nm]				
Conductor Cross Section (max)		2 AWG (Solid, Stranded) / 4 AWG (Flexible) 35 mm ² (Solid, Stranded) / 25 mm ² (Flexible)				
Mounting		35 mm DIN Rail, EN 60715				
Degree of Protection		IP 20 (built-in)				
Housing Material		Thermoplastic: Extinguishing Degree UL 94 V-0				
Thermal Protection		Yes				
Operating State / Fault Indication		Green Flag / Not Green Flag				
Remote Contacts (RC)		Optional				
RC Switching Capacity		AC: 250V/1A, 125V/1A; DC: 48V/0.5A, 24V/0.5A, 12V/0.5A				
RC Conductor Cross Section (max)		16 AWG (Solid) / 1.5 mm ² (Solid)				

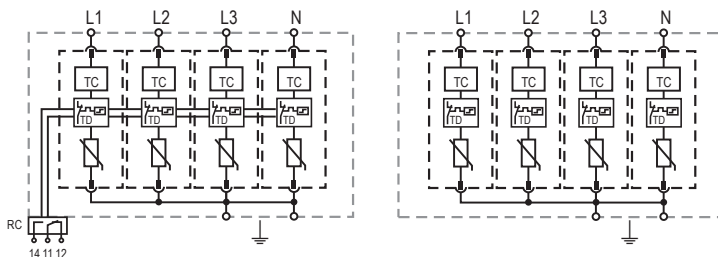
Order Information						
Order Code		150	300	350	480	550
SafeTec T2-xxx-4+0		59.0176	59.0178	59.0180	59.0182	59.0184
SafeTec T2-xxx-4+0-R (with remote contacts)		59.0177	59.0179	59.0181	59.0183	59.0185
SafeTec T2-xxx-P (plug)		59.0126	59.0127	59.0128	59.0129	59.0299

SafeTec T2 4+0

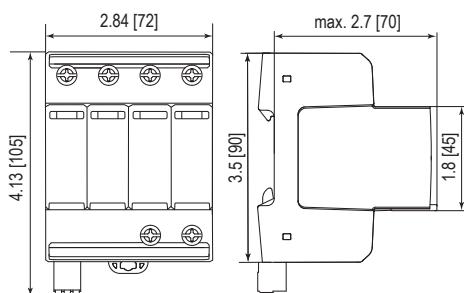
Internal Configuration

Legend

- L Line Conductor Terminal
- N Neutral Conductor Terminal
- PE/G Conductor Terminal
- RC Remote Contacts Terminal (Optional)
- TC Thermal Control Function
- TD Thermal Disconnect



Complete Unit

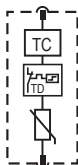


Complete Unit Dimensions & Packaging

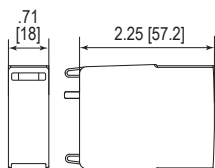
		150	300	350	480	550	
SafeTec T2-xxx-4+0	Weight	pounds	1.050	1.077	1.147	1.156	1.200
		grams	476	488	520	524	544
SafeTec T2-xxx-4+0-R							
Weight	pounds	1.070	1.097	1.167	1.176	1.220	
	grams	485	497	529	533	553	
DIN 43880 Dimension		4 TE / 2.84" [72]					
Packaging Dimensions (HxWxL)		4.3 x 4.5 x 13.8" [109 x 115 x 352 mm]					
Standard Order Quantity		4 Units					

Plug Internal Configuration

SafeTec T2-xxx-P



Spare Plug



Single Unit Dimensions & Packaging

		150	300	350	480	550	
SafeTec T2-xxx-P	Weight	pounds	.139	.146	.163	.165	.176
		grams	63	66	74	75	80
DIN 43880 Dimension		1 TE / .71" [18]					
Packaging Dimensions (HxWxL)		3.2 x 4.5 x 12" [83 x 115 x 305 mm]					
Standard Order Quantity		24 Units					

inches
[mm]

Information contained in this document is subject to change at any time without notice.

