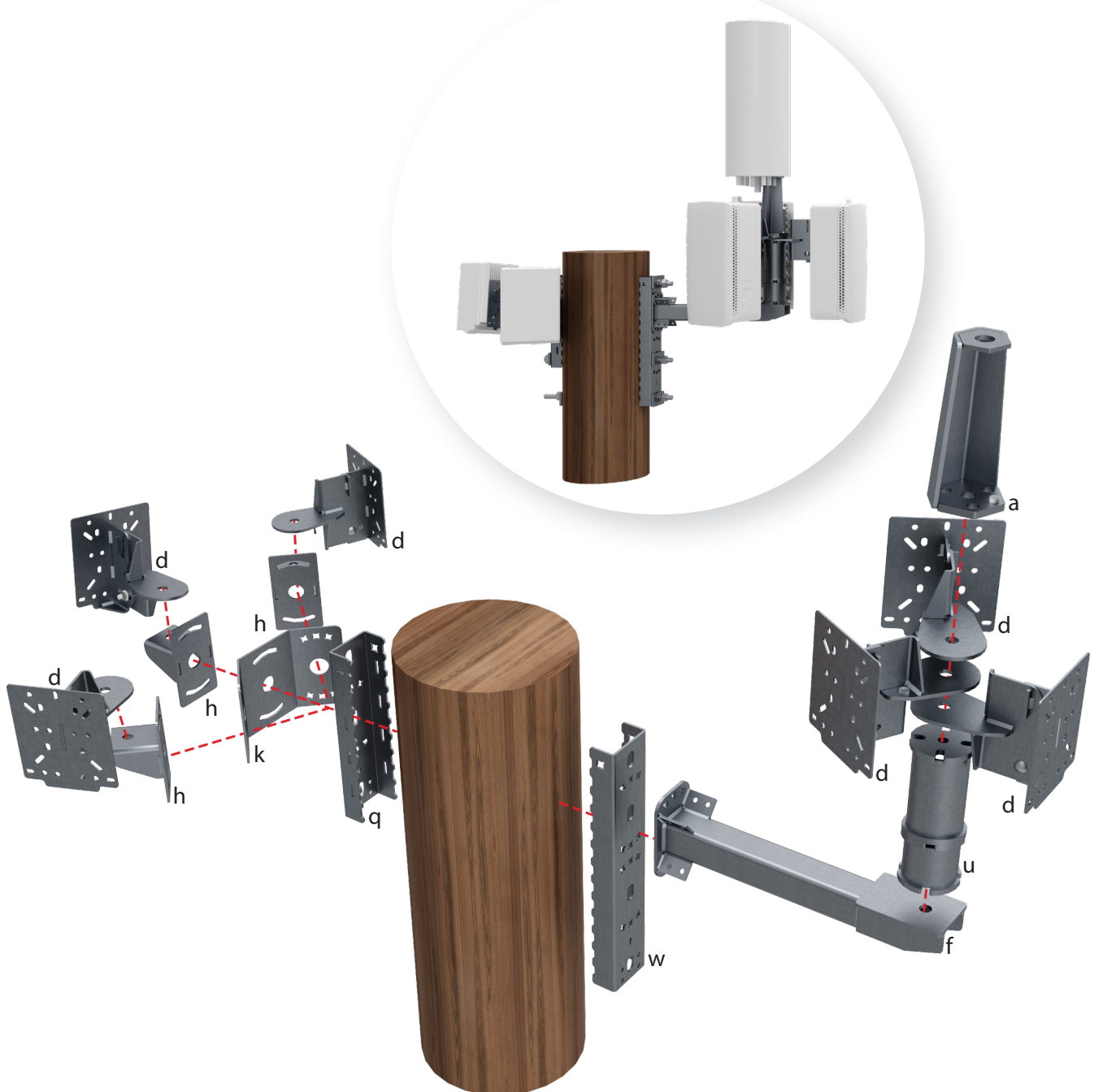


Our modular mount series offers nearly endless combinations that can be made with a set of modular components. Available options are not limited to the highlighted pre-built assemblies, which are intended to inspire.

Modular System features:

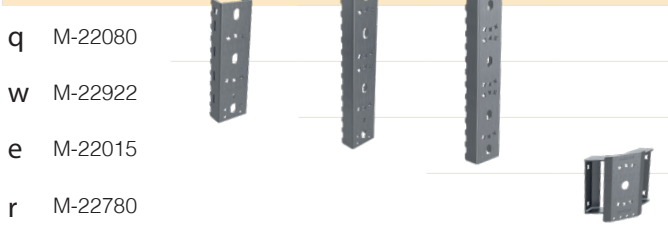
- Can be employed to fit almost any custom equipment configuration.
- Accommodates all 5G mmWave radios or small panel, whip, or canister 4G antennas.
- Variable pole diameter – attaches to most common sizes.
- All common OEMs are supported including: Amphenol, Ericsson, Commscope, Galtronics, Gamma Nu, JMA, Kathrein, Nokia, and Samsung.
- All structural steel hot dip galvanized per ASTM A123 with optional powder coated finish.
- Integrated leveling is provided in three axis for all technologies, and bulls-eye leveling dots are included.
- The example assemblies shown have been designed to withstand a 140mph wind loading.\*





## Modular Components

### Connection to Pole



- q M-22080
- w M-22922
- e M-22015
- r M-22780

Single Leg Options			Dual Leg Options	
RTR-M-22523	RTR-M-22092	RTR-M-22148	RTR-M-22783	RTR-M-22238

### Leveling



- t M-22062
- y M-22231
- u M-22436

### Equipment Mounting – Radios And Antennas



- i M-22643
- o M-22047
- a M-22858
- s M-22631
- d M-22078

### Side Arm Options



- f M-22193
- g M-22291

### Adapter/Extension Brackets



- h M-22925
- j M-22513
- k M-22774
- l M-22919

	✓	✓	✓	✓✓
			✓✓	✓✓
	✓	✓	✓	
			✓	✓
	✓	✓		
			✓	✓
			✓✓✓	✓✓
			✓✓✓	✓✓
	✓	✓	✓	
		✓	✓	✓
			✓	✓



## Modular Components

### Connection to Pole

q w e r		M-22080	Base component universal mounting pattern	Mounting	Strapped or thru-bolted
		Overall Dimensions	14.5" H x 4" W		
		Weight	5 lbs		
		M-22922	Base component 2 universal mounting patterns	Mounting	Strapped or thru-bolted
Overall Dimensions	20.5" H x 4" W				
Weight	7 lbs				
M-22015	Base component 3 universal mounting patterns	Mounting	Strapped or thru-bolted		
Overall Dimensions	26.625" H x 4" W				
Weight	9.2 lbs				
M-22780	Triple clamp assembly	Mounting	Clamping/Optional thru-bolted		
Pole Diameter	7" - 14" diameter poles				
Weight	6.3 lbs				

### Leveling

t y u		M-22062	Leveling for omni whip and canister antennas	Degree of Tilt	Up to 5° in any direction
		Overall Dimensions	3.5" OD		
		Weight	0.6 lbs		
M-22231	Heavy duty leveling assembly, tall	Degree of Tilt	15° in any direction		
Overall Dimensions	18" H x 3.5" OD				
Weight	14.9 lbs				
M-22436	Heavy duty leveling assembly, compact	Degree of Tilt	15° in any direction		
Overall Dimensions	10" H x 3.5" OD				
Weight	9.9 lbs				

### Equipment Mounting – Radios And Antennas

i o a s d		M-22643	Whip antenna mount, bolt	Mounting	Spirit level included
		Overall Dimensions	9.875" H x 5.75" W		
		Weight	2 lbs		
		M-22047	Whip antenna mount, clamp	Mounting	Spirit level included
		Overall Dimensions	9.625" H x 5.9063" W		
		Weight	3.9 lbs		
M-22858	Omni-directional canister antenna mount	Mounting	Spirit level included		
Overall Dimensions	9.5" H x 3.9063" W				
Weight	5.2 lbs				
M-22631	Omni-directional canister antenna mount	Mounting	Spirit level included		
Overall Dimensions	9.8" H x 6.0" W				
Weight	6.4 lbs				
M-22078	Radio mounting bracket for all major radios	Degree of Tilt	10° downtilt, 5° uptilt		
Overall Dimensions	9.4375" H x 6.9063" W	Mounting	Spirit level included		
Weight	5.6 lbs				

### Side Arm Options

f g		M-22193	Side arm, single-bolt pattern		Custom lengths available
		Overall Dimensions	21.25" L x 6.5" H x 4" W		
Weight	14 lbs				
M-22291	Side arm extension, universal mounting pattern		Custom lengths available		
Overall Dimensions	18.25" L x 6.5" H x 4" W				
Weight	12.2 lbs				

### Adapter/Extension Brackets

h j k l		M-22925	Converts universal to single-bolt mount pattern		
		Overall Dimensions	3.6875" L x 7" H x 4" W		
Weight	2.5 lbs				
M-22513	90° universal mounting pattern adapter	Mounting	Orientation is reversible		
Overall Dimensions	7.25" L x 9.5" H x 4.75" W				
Weight	8.5 lbs				
M-22774	Two additional universal mounting locations	Mounting	Orientation is reversible		
Overall Dimensions	7" H x 11.4063" W x 3" D				
Weight	6.1 lbs				
M-22919	Bridge support for (2) legs (M-22922 or M-22015)	Mounting	Allows clamping on 7" - 14" diameter poles		
Overall Dimensions	17" L x 2.6875" H x 4.4375" W				
Weight	7.4 lbs				

Products in this guide are examples of our offerings.  
Please contact us for custom solutions.

© 2024 Raycap All rights reserved.  
G09-00-195 240419