

DATA SHEET

In-line SPD for Coaxial & RF Systems

RayDat CP 7/16 Series**C1 • C2 • C3****CCP-7/16 Series**

IEC/EN Category: C1/C2/C3
 Surge Discharge Ratings: I_n : 10 kA, I_{max} : 20 kA
 Max. Operating Voltage: 70, 180, 280 V
 Maximum Peak Power: 40, 125, 300 W
 Frequency Range: DC–2.5 GHz
 Impedance: 50 Ω
 Insertion Loss: < 0.2 dB
 Return Loss: > 20 dB
 Termination: 7/16 Type (M-F)
 Housing: Bulkhead Installation,
 Shielded Enclosure
 Compliance: IEC/EN 61643-21

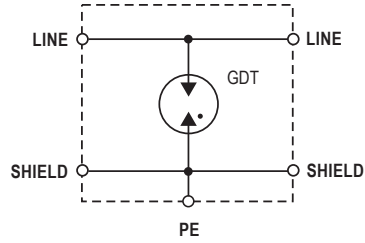
**Technical Data**

CP 7/16-MF		70	180	280
Electrical				
Maximum Continuous Operating Voltage	U_c	70 V	180 V	280 V
Maximum Peak Power	P_{max}	40 W	125 W	300 W
C2 Nominal Discharge Current (8/20 μ s)	I_n		10 kA	
Maximum Discharge Current (8/20 μ s)	I_{max}		20 kA	
Residual Voltage at (1 kV/ μ s)	U_{res}	< 600 V	< 700 V	< 900 V
Impedance	Z		50 Ω	
Insertion Loss	I_L		< 0.2 dB	
Return Loss	R_L		> 20 dB	
Insulation Resistance of Protection	R_{iso}		> 10 G Ω	
Frequency Range	f_G		0–2.5 GHz	
Mechanical				
Temperature Range		-40 °F to +176 °F [-40 °C to +80 °C]		
Connection		7/16 Male/Female		
Degree of Protection IEC/EN 60529		IP 20 (built-in)		
Housing Material		Metal		
Order Information				
Order Code		70	180	280
CP 7/16-MF-xxx		800 856	800 857	800 858

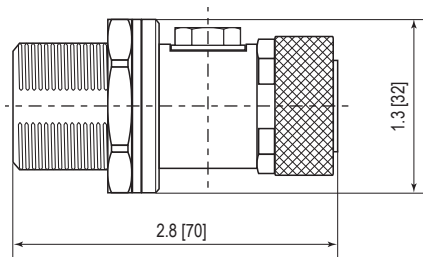
RayDat CP 7/16 Series

Internal Configuration

Legend
 GDT Gas Discharge Tube
 PE Ground



Dimensions & Packaging



CP 7/16-MF	70	180	280
Dimensions			
Weight per Unit		7.7 oz [218g]	
Packaging Dimensions (Single Unit)		3.2 x 1.6 x 1.6" [82 x 40 x 40mm]	
Minimum Package Quantity		100 pieces	

inches
[mm]

Information contained in this document is subject to change at any time without notice.

RoHS
COMPLIANT  **CE**

Raycap

www.raycap.com

© 2020 Raycap All rights reserved.
G29-00-051 201120