

DATA SHEET SPD for Telecommunication Side
RayTel 10
C1 • C2 • C3



IEC/EN Category: C1/C2/C3
 Surge Discharge Ratings: I_n : 5 kA, I_{max} : 10 kA
 Voltages: 175 V DC
 Max. Operating Voltage: 175 V DC
 Housing: Compact Design
 Compliance: IEC/EN 61643-21



Technical Data

RayTel 10

Electrical

Maximum Continuous Operating DC Voltage	U_c	175 V
Maximum Operating Current	I_L	150 mA
Nominal Discharge Current (8/20 μ s)	(a/b-PE, a-b) I_n	2.5 kA
Maximum Discharge Current (8/20 μ s)	I_{max}	5 kA
Protection Level at [U_p] at [I_n] (8/20 μ s)	(a-b) U_p	≤ 300 V
Protection Level at [U_p] at [I_n] (8/20 μ s)	(a/b-PE) U_p	≤ 1000 V
Series Resistance at 20°C [R]	R	0.2 - 0.4 Ω
Series Inductance [L]	L	2 x 25 μ H
Capacitance [C]	C	<100 pF
Frequency Range	f_G	up to 10 MHz
Response Time (a-b)	t_A	<5 ns
Response Time (a, b-PE)	t_A	<100 ns
Connection (Input/Output)		RJ11 or RJ45

Mechanical

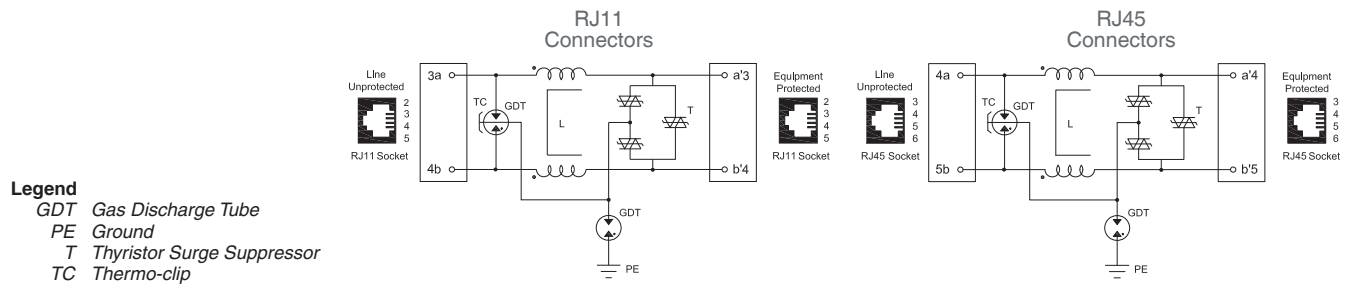
Temperature Range	-40 °F to +140 °F [-40 °C to +60 °C]
Degree of Protection IEC/EN 60529	IP20 (built-in)
Housing Material	Thermoplastic; Grey; Extinguishing Degree V-0

Order Information

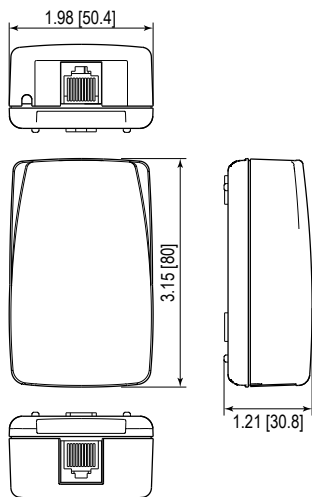
Order Code	
RayTel 10	124 150

RayTel 10

Internal Configuration



Dimensions & Packaging



RayTel 10

Dimensions

Weight per Unit	2.46 oz [70g]
Packaging Dimensions (Single Unit)	4.2 × 2.9 × 1.4" [108 × 75 × 36 mm]
Minimum Package Quantity	8 pieces

inches
[mm]

Information contained in this document is subject to change at any time without notice.

