

Oversvoltage Protection
SafeTec T2 2+0
Class II • Type 2 • Type 1CA



Location of Use: Sub-distribution Boards
 Network Systems: TN-S
 Mode of Protection: L-N, N-PE
 IEC/EN/UL Category: Class II / Type 2 / Type 1CA
 Safety: Patented Current Limiting Technology
 Housing: Pluggable Design
 Compliance: IEC 61643-11:2011
 EN 61643-11:2012
 UL 1449 4th Edition

Technical Data

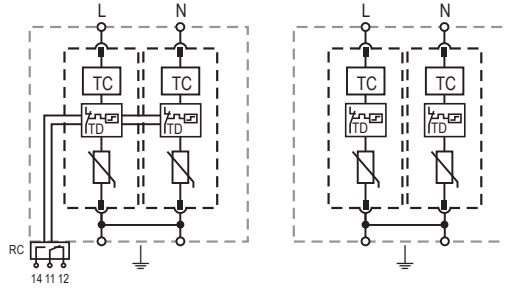
SafeTec T2-xxx-2+0(-R)		75	150	300	350	480	550	750	880
IEC Electrical									
Nominal AC Voltage (50/60Hz)	U_o/U_n	60V	120V	240V	277V	400V	400V	600V	600V
Maximum Continuous Operating Voltage (AC)	U_c	75V	150V	300V	350V	480V	550V	750V	880V
Nominal Discharge Current (8/20 μ s)	I_n	20 kA	20 kA	20 kA	20 kA	20 kA	20 kA	20 kA	20 kA
Maximum Discharge Current (8/20 μ s)	I_{max}	50 kA	50 kA	50 kA	50 kA	50 kA	50 kA	35 kA	35 kA
Voltage Protection Level	U_p	800V	1250V	1650V	1750V	2300V	2500V	3500V	3600V
Response Time	t_A	< 25 ns							
Overcurrent Protection (max)		315 A/250 A gG							
Short-Circuit Current Rating (AC)	I_{SCCR}	25 kA/50 kA							
TOV Withstand 120min	U_T	150V	255V	442V	529V	762V	918V	1200V	1250V
Number of Ports		1							
UL Electrical									
Maximum Continuous Operating Voltage (AC)	MCOV	75V	150V	300V	350V	480V	550V	750V	880V
Voltage Protection Rating	VPR	600V	700V	1200V	1200V	1500V	1800V	2500V	2500V
Nominal Discharge Current (8/20 μ s)	I_n	20 kA	20 kA	20 kA	20 kA	20 kA	20 kA	20 kA	20 kA
Short-Circuit Current Rating (AC)	SCCR	85kA	200kA	150kA	200kA	200kA	200kA	200kA	200kA
Mechanical & Environmental									
Operating Temperature Range	T_a	-40 °F to +185 °F [-40 °C to +85 °C]							
Permissible Operating Humidity	RH	5%...95%							
Altitude (max)		13123 ft [4000m]							
Terminal Screw Torque	M_{max}	39.9 lbf-in [4.5Nm]							
Conductor Cross Section (max)		2 AWG (Solid, Stranded) / 4 AWG (Flexible) 35 mm ² (Solid, Stranded) / 25 mm ² (Flexible)							
Mounting		35 mm DIN Rail, EN 60715							
Degree of Protection		IP 20 (built-in)							
Housing Material		Thermoplastic: Extinguishing Degree UL 94 V-0							
Thermal Protection		Yes							
Operating State / Fault Indication		Green Flag / Not Green Flag							
Remote Contacts (RC)		Optional							
RC Switching Capacity		AC: 250V/1A, 125V/1A; DC: 48V/0.5A, 24V/0.5A, 12V/0.5A							
RC Conductor Cross Section (max)		16 AWG (Solid) / 1.5 mm ² (Solid)							
Order Information									
Order Code		75	150	300	350	480	550	750	880
SafeTec T2-xxx-2+0		59.0345	59.0148	59.0150	59.0152	59.0154	59.0156	59.0158	59.0160
SafeTec T2-xxx-2+0-R (with remote contacts)		59.0346	59.0149	59.0151	59.0153	59.0155	59.0157	59.0159	59.0161
SafeTec T2-xxx-P (plug)		59.0125	59.0126	59.0127	59.0128	59.0129	59.0299	59.0130	59.0131

SafeTec T2 2+0

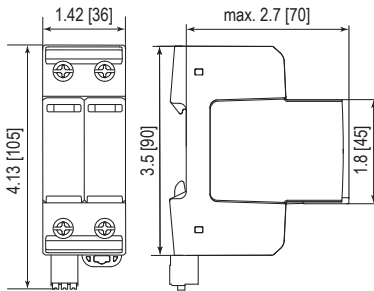
Internal Configuration

Legend

- L Line Conductor Terminal
- N Neutral Conductor Terminal
- PE/G Conductor Terminal
- RC Remote Contacts Terminal (Optional)
- TC Thermal Control Function
- TD Thermal Disconnect



Complete Unit

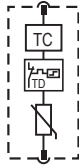


Complete Unit Dimensions & Packaging

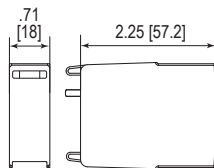
SafeTec T2-xxx-2+0	75	150	300	350	480	550	750	880	
Weight	pounds	.545	.567	.580	.616	.620	.642	.677	.686
	grams	247	257	263	279	281	291	307	311
SafeTecT2-xxx-2+0-R									
Weight	pounds	.565	.587	.600	.635	.640	.662	.697	.706
	grams	256	266	272	288	290	300	316	320
DIN 43880 Dimension	2 TE / 1.42" [36]								
Packaging Dimensions (HxWxL)	4.3 x 4.5 x 13.8" [109 x 115 x 352 mm]								
Standard Order Quantity	7 Units								

Plug Internal Configuration

SafeTec T2-xxx-P



Spare Plug



Single Unit Dimensions & Packaging

SafeTec T2-xxx-P	75	150	300	350	480	550	750	880	
Weight	pounds	.128	.139	.146	.163	.165	.176	.194	.198
	grams	58	63	66	74	75	80	88	90
DIN 43880 Dimension	1 TE / .71" [18]								
Packaging Dimensions (HxWxL)	3.2 x 4.5 x 12" [83 x 115 x 305 mm]								
Standard Order Quantity	24 Units								

inches
[mm]

Information contained in this document is subject to change at any time without notice.

