

# Pluggable Multi-Pole SPD ProTec T2-ADV 1+1

**Class II • Type 2 • Type 1CA**



Location of Use: Sub-Distribution Boards  
 Network Systems: TT, TN-S  
 Mode of Protection: L-N, N-PE  
 Surge Ratings:  $I_n = 20\text{ kA (8/20 }\mu\text{s)}$   
 $I_{max} = 50\text{ kA (8/20 }\mu\text{s)}$   
 IEC/EN/UL Category: Class II / Type 2 / Type 1CA  
 Protective Elements: High Energy MOV and GDT  
 Housing: Pluggable Design  
 Compliance: IEC 61643-11:2011  
 EN 61643-11:2012  
 UL 1449 4th Edition

## Technical Data

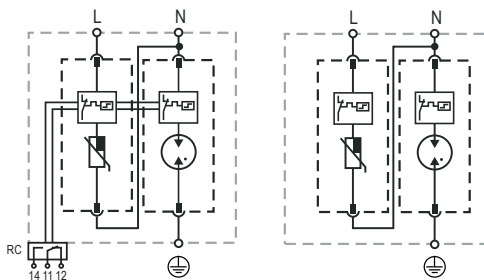
ProTec T2-ADV-xxx-1+1(-R)		75	150	300	350
<b>IEC Electrical</b>					
Nominal AC Voltage (50/60Hz)	$U_o/U_n$	60V	120V	240V	277V
Maximum Continuous Operating Voltage (AC)	(L-N) $U_c$	75V	150V	300V	350V
	(N-PE) $U_c$	305V	305V	305V	305V
Nominal Discharge Current (8/20 $\mu\text{s}$ )	(L-N)/(N-PE) $I_n$	20 kA / 40 kA	20 kA / 40 kA	20 kA / 40 kA	20 kA / 40 kA
Maximum Discharge Current (8/20 $\mu\text{s}$ )	(L-N)/(N-PE) $I_{max}$	50 kA / 65 kA	50 kA / 65 kA	50 kA / 65 kA	50 kA / 65 kA
Voltage Protection Level	(L-N)/(N-PE) $U_p$	600V / 1500V	1000V / 1500V	1300V / 1500V	1700V / 1500V
Follow Current Interrupt Rating	(N-PE) $I_{fi}$	100 A <sub>RMS</sub>			
Response Time	(L-N)/(N-PE) $t_A$	< 25 ns / < 100 ns			
Back-Up Fuse (max)		160A gG			
Short-Circuit Current Rating (AC)	$I_{SCCR}$	50 kA			
TOV Withstand 5s	(L-N) $U_T$	114V	229V	337V	403V
	(L-N) $U_T$ mode	Withstand	Withstand	Safe Fail	Safe Fail
TOV 120min	(L-N) $U_T$	114V	229V	442V	528V
TOV Withstand 200ms	(N-PE) $U_T$	1200V			
Number of Ports		1			
<b>UL Electrical</b>					
Maximum Continuous Operating Voltage (AC)	(L-N)/(N-PE) MCOV	75V / 305V	150V / 305V	300V / 305V	350V / 305V
Voltage Protection Rating	(L-N)/(N-PE) VPR	400V / 1000V	600V / 1000V	900V / 1000V	1200V / 1000V
Nominal Discharge Current (8/20 $\mu\text{s}$ )	(L-N)/(N-PE) $I_n$	20 kA / 20 kA			
Short-Circuit Current Rating (AC)	(L-N) SCCR	100 kA	200 kA	150 kA	200 kA
<b>Mechanical &amp; Environmental</b>					
Operating Temperature Range	$T_a$	-40 °F to +185 °F [-40 °C to +85 °C]			
Permissible Operating Humidity	RH	5%...95%			
Altitude		13123 ft [4000m]			
Terminal Screw Torque	$M_{max}$	39.9 lbf-in [4.5Nm]			
Conductor Cross Section (max)		2 AWG (Solid, Stranded) / 4 AWG (Flexible)			
		35 mm <sup>2</sup> (Solid, Stranded) / 25 mm <sup>2</sup> (Flexible)			
Mounting		35 mm DIN Rail, EN 60715			
Degree of Protection		IP 20 (built-in)			
Housing Material		Thermoplastic: Extinguishing Degree UL 94 V-0			
Thermal Protection		Yes			
Operating State / Fault Indication		Green Flag / Not Green Flag			
Remote Contacts (RC)		Optional			
RC Switching Capacity		AC: 250V/1A, 125V/1A; DC: 48V/0.5A, 24V/0.5A, 12V/0.5A			
RC Conductor Cross Section (max)		16 AWG (Solid) / 1.5mm <sup>2</sup> (Solid)			
<b>Order Information</b>					
Order Code		75	150	300	350
ProTec T2-ADV-xxx-1+1		59.0244	59.0246	59.0248	59.0250
ProTec T2-ADV-xxx-1+1-R (with remote contacts)		59.0245	59.0247	59.0249	59.0251
ProTec T2-ADV-xxx-P		59.0203	59.0204	59.0205	59.0206
ProTube T2-ADV-40-P		59.0275	59.0275	59.0275	59.0275

## ProTec T2-ADV 1+1

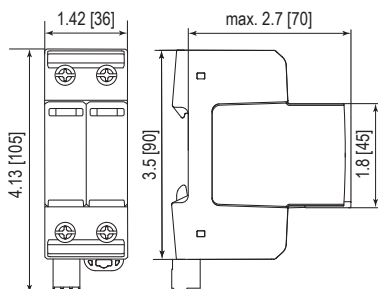
### Internal Configuration

#### Legend

- L Line
- N Neutral
- ⊕ Protective Earth
- RC Remote Contacts Optional



### Dimensions & Packaging



#### Dimensions & Packaging

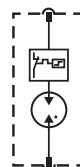
		75	150	300	350
<b>ProTec T2-ADV-xxx-1+1</b>					
Single Unit Weight	pounds	.500	.509	.524	.535
	grams	227	231	238	243
<b>ProTec T2-ADV-xxx-1+1-R</b>					
Single Unit Weight	pounds	.513	.522	.537	.548
	grams	233	237	244	249
Single Unit DIN 43880 Dimension		2 TE			
Packaging Dimensions (HxWxL)		4.3 x 4.5 x 13.8" [109 x 115 x 352 mm]			
Minimum Order Quantity		7 Units			

### Plug Internal Configuration

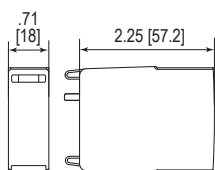
#### ProTec T2-ADV-xxx-P



#### ProTube T2-ADV-40-P



### Dimensions & Packaging



#### Dimensions & Packaging

		75	150	300	350
<b>ProTec T2-ADV-xxx-P</b>					
Single Unit Weight	pounds	.120	.127	.143	.154
	grams	54	58	65	70
<b>ProTube T2-ADV-40-P</b>			40		
Single Unit Weight	pounds		.093		
	grams		42		
Single Unit DIN 43880 Dimension		1 TE			
Packaging Dimensions (HxWxL)		4.3 x 4.5 x 13.8" [109 x 115 x 352 mm]			
Minimum Order Quantity		24 Units			

inches  
[mm]

Information contained in this document is subject to change at any time without notice.



# Raycap

www.raycap.com

© 2018 Raycap All rights reserved.  
G29-00-416 180216