

**Pluggable Multi-Pole SPD**  
**SafeTec T2 3+1**  
**Class II • Type 2 • Type 1CA**



Location of Use: Sub-distribution Boards  
 Network Systems: TT, TN-S  
 Mode of Protection: L-N, N-PE  
 Surge Ratings:  $I_n = 20\text{ kA}/40\text{ kA}$  (8/20 $\mu\text{s}$ )  
 $I_{max} = 50\text{ kA}/65\text{ kA}$  (8/20 $\mu\text{s}$ )  
 IEC/EN/UL Category: Class II / Type 2 / Type 1CA  
 Protective Elements: High Energy MOV and GDT  
 Safety: Patented Current Limiting  
 Housing: Pluggable Design  
 Compliance: IEC 61643-11:2011  
 EN 61643-11:2012  
 UL 1449 4<sup>th</sup> Edition

**Technical Data**

**SafeTec T2-xxx-3+1(-R)**

		<b>300</b>	<b>350</b>
<b>IEC Electrical</b>			
Nominal AC Voltage (50/60Hz)	$U_o/U_n$	240 V	277 V
Maximum Continuous Operating Voltage (AC)	(L - N) $U_c$	300 V	350 V
	(N - PE) $U_c$	305 V	305 V
Nominal Discharge Current (8/20 $\mu\text{s}$ )	(L - N)/(N - PE) $I_n$	20 kA/40 kA	20 kA/40 kA
Maximum Discharge Current (8/20 $\mu\text{s}$ )	(L - N)/(N - PE) $I_{max}$	50 kA/65kA	50 kA/65kA
Voltage Protection Level	(L - N)/(N - PE) $U_p$	1650 V/1500 V	1750 V/1500 V
Follow Current Interrupt Rating	(N - PE) $I_{fi}$	100 A <sub>RMS</sub>	
Response Time	(L - N)/(N - PE) $t_A$	< 25 ns/ < 100 ns	
Back-Up Fuse (max)		315 A/250 A gG	
Short-Circuit Current Rating (AC)	(L - N) $I_{SCCR}$	25 kA/50 kA	
TOV Withstand 120min	(L - N) $U_T$	442 V	529 V
TOV Withstand 200ms	(N - PE) $U_T$	1200 V	
Number of Ports		1	

**UL Electrical**

Maximum Continuous Operating Voltage (AC)	(L - N)/(N - PE) MCOV	300 V/305 V	350 V/305 V
Voltage Protection Rating	(L - N)/(N - PE) VPR	1200 V/1000 V	1200 V/1000 V
Nominal Discharge Current (8/20 $\mu\text{s}$ )	(L - N)/(N - PE) $I_n$	20 kA/20 kA	
Short-Circuit Current Rating (AC)	(L - N) SCCR	150 kA	200 kA

**Mechanical**

Operating Temperature Range	$T_a$	-40 °F to +185 °F [-40 °C to +85 °C]	
Permissible Operating Humidity	RH	5%...95%	
Altitude		13123 ft [4000m]	
Terminal Screw Torque	$M_{max}$	39.9 lbf-in [4.5 Nm]	
Conductor Cross Section (max)		2 AWG (Solid, Stranded) / 4 AWG (Flexible)	
		35 mm <sup>2</sup> (Solid, Stranded) / 25 mm <sup>2</sup> (Flexible)	
Mounting		35 mm DIN Rail, EN 60715	
Degree of Protection		IP 20 (built-in)	
Housing Material		Thermoplastic: Extinguishing Degree UL 94 V-0	
Thermal Protection		Yes	
Operating State / Fault Indication		Green Flag / Not Green Flag	
Remote Contacts (RC)		Optional	
RC Switching Capacity		AC: 250V/1A, 125V/1A; DC: 48V/0.5A, 24V/0.5A, 12V/0.5A	
RC Conductor Cross Section (max)		16 AWG (Solid) / 1.5 mm <sup>2</sup> (Solid)	

**Order Information**

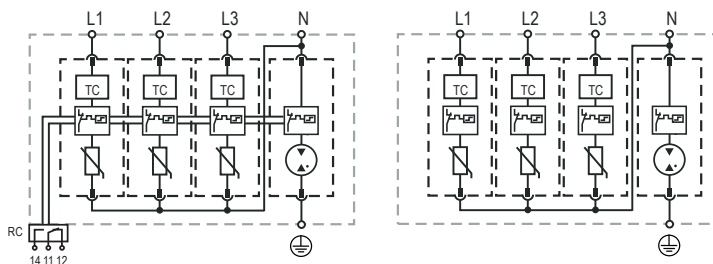
Order Code	<b>300</b>	<b>350</b>
SafeTec T2-xxx-3+1	59.0198	59.0200
SafeTec T2-xxx-3+1-R (with remote contacts)	59.0199	59.0201
SafeTec T2-xxx-P	59.0127	59.0128
SafeTube T2-40-P	59.0274	59.0274

## SafeTec T2 3+1

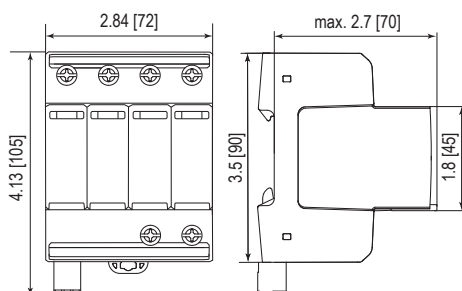
### Internal Configuration

#### Legend

- L Line
- N Neutral
- ⊕ Protective Earth
- RC Remote Contacts Optional
- TC Thermal Control Function



### Dimensions & Packaging

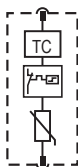


#### Dimensions & Packaging

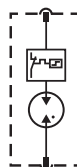
		300	350
<b>SafeTec T2-xxx-3+1</b>			
Single Unit Weight	pounds	.792	.810
	grams	359	367
<b>SafeTec T2-xxx-3+1-R</b>			
Single Unit Weight	pounds	.812	.829
	grams	368	376
Single Unit DIN 43880 Dimension		4 TE	
Packaging Dimensions (HxWxL)		4.3 x 4.5 x 13.8" [109 x 115 x 352 mm]	
Minimum Order Quantity		4 Units	

### Plug Internal Configuration

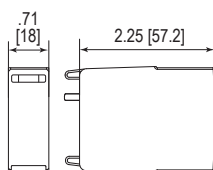
#### SafeTec T2-xxx-P



#### SafeTube T2-40-P



### Dimensions & Packaging



#### Dimensions & Packaging

		300	350
<b>SafeTec T2-xxx-P</b>			
Single Unit Weight	pounds	.144	.161
	grams	65	73
<b>SafeTube T2-40-P</b>			<b>40</b>
Single Unit Weight	pounds	.093	
	grams	42	
Single Unit DIN 43880 Dimension		1 TE	
Packaging Dimensions (HxWxL)		4.3 x 4.5 x 13.8" [109 x 115 x 352 mm]	
Minimum Order Quantity		24 Units	

inches  
[mm]

Information contained in this document is subject to change at any time without notice.

