

Pluggable Multi-Pole SPD
SafeTec T2 2+0
Class II • Type 2 • Type 1CA



Location of Use: Sub-distribution Boards
 Network Systems: TN-S
 Mode of Protection: L-N, N-PE
 Surge Ratings: I_n = up to 20 kA (8/20 μ s)
 I_{max} = up to 50 kA (8/20 μ s)
 IEC/EN/UL Category: Class II / Type 2 / Type 1CA
 Protective Elements: High Energy MOV and GDT
 Safety: Patented Current Limiting
 Housing: Pluggable Design
 Compliance: IEC 61643-11:2011
 EN 61643-11:2012
 UL 1449 4th Edition

Technical Data

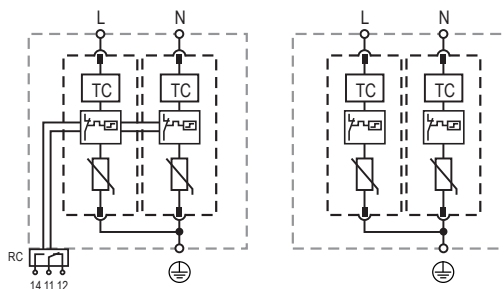
SafeTec T2-xxx-2+0(-R)		75	150	300	350	480	550	750	880
IEC Electrical									
Nominal AC Voltage (50/60Hz)	U_o/U_n	60V	120V	240V	277V	400V	400V	600V	600V
Maximum Continuous Operating Voltage (AC)	U_c	75V	150V	300V	350V	480V	550V	750V	880V
Nominal Discharge Current (8/20 μ s)	I_n	20 kA	20 kA	20 kA	20 kA	20 kA	20 kA	20 kA	20 kA
Maximum Discharge Current (8/20 μ s)	I_{max}	50 kA	50 kA	50 kA	50 kA	50 kA	50 kA	35 kA	35 kA
Voltage Protection Level	U_p	800V	1250V	1650V	1750V	2300V	2500V	3500V	3600V
Response Time	t_A	< 25 ns							
Back-Up Fuse (max)		315 A/250 A gG							
Short-Circuit Current Rating (AC)	I_{SCCR}	25 kA/50 kA							
TOV Withstand 120min	U_T	150V	255V	442V	529V	762V	918V	1200V	1250V
Number of Ports		1							
UL Electrical									
Maximum Continuous Operating Voltage (AC)	MCOV	75V	150V	300V	350V	480V	550V	750V	880V
Voltage Protection Rating	VPR	600V	700V	1200V	1200V	1500V	1800V	2500V	2500V
Nominal Discharge Current (8/20 μ s)	I_n	20 kA	20 kA	20 kA	20 kA	20 kA	20 kA	20 kA	20 kA
Short-Circuit Current Rating (AC)	SCCR	85 kA	200 kA	150 kA	200 kA	200 kA	200 kA	200 kA	200 kA
Mechanical & Environmental									
Operating Temperature Range	T_a	-40 °F to +185 °F [-40 °C to +85 °C]							
Permissible Operating Humidity	RH	5%...95%							
Altitude (max)		13123 ft [4000 m]							
Terminal Screw Torque	M_{max}	39.9 lbf-in [4.5 Nm]							
Conductor Cross Section (max)		2 AWG (Solid, Stranded) / 4 AWG (Flexible) 35 mm ² (Solid, Stranded) / 25 mm ² (Flexible)							
Mounting		35 mm DIN Rail, EN 60715							
Degree of Protection		IP 20 (built-in)							
Housing Material		Thermoplastic: Extinguishing Degree UL 94 V-0							
Thermal Protection		Yes							
Operating State / Fault Indication		Green Flag / Not Green Flag							
Remote Contacts (RC)		Optional							
RC Switching Capacity		AC: 250V/1A, 125V/1 A; DC: 48V/0.5A, 24V/0.5A, 12V/0.5 A							
RC Conductor Cross Section (max)		16 AWG (Solid) / 1.5 mm ² (Solid)							
Order Information									
Order Code		75	150	300	350	480	550	750	880
SafeTec T2-xxx-2+0		59.0345	59.0148	59.0150	59.0152	59.0154	59.0156	59.0158	59.0160
SafeTec T2-xxx-2+0-R (with remote contacts)		59.0346	59.0149	59.0151	59.0153	59.0155	59.0157	59.0159	59.0161
SafeTec T2-xxx-P		59.0125	59.0126	59.0127	59.0128	59.0129	59.0299	59.0130	59.0131

SafeTec T2 2+0

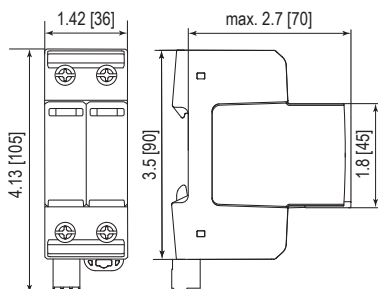
Internal Configuration

Legend

- L Line
- N Neutral
- ⊕ Protective Earth
- RC Remote Contacts Optional
- TC Thermal Control Function



Dimensions & Packaging

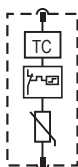


Dimensions & Packaging

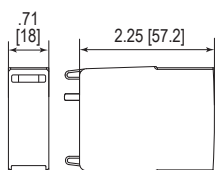
SafeTec T2-xxx-2+0	75	150	300	350	480	550	750	880	
Single Unit Weight	pounds	.534	.552	.574	.609	.622	.644	.688	.688
	grams	242	250	260	276	282	292	312	312
SafeTec T2-xxx-2+0-R	75	150	300	350	480	550	750	880	
Single Unit Weight	pounds	.565	.583	.605	.640	.653	.675	.719	.719
	grams	256	264	274	290	296	306	326	326
Single Unit DIN 43880 Dimension	2 TE								
Packaging Dimensions (HxWxL)	4.3 x 4.5 x 13.8" [109 x 115 x 352 mm]								
Minimum Order Quantity	7 Units								

Plug Internal Configuration

SafeTec T2-xxx-P



Dimensions & Packaging



Dimensions & Packaging

SafeTec T2-xxx-P	75	150	300	350	480	550	750	880	
Single Unit Weight	pounds	.124	.133	.144	.161	.168	.179	.201	.201
	grams	56	60	65	73	76	81	91	91
Single Unit DIN 43880 Dimension	1 TE								
Packaging Dimensions (HxWxL)	4.3 x 4.5 x 13.8" [109 x 115 x 352 mm]								
Minimum Order Quantity	24 Units								

inches
[mm]

Information contained in this document is subject to change at any time without notice.

