

Pluggable Multi-Pole SPD
ProTube T2 40 0+1
 Class II • Type 2 • Type 1CA



Location of Use: Sub-Distribution Boards
 Network Systems: TT, TN-S
 Mode of Protection: N-PE
 Surge Ratings: $I_n = 20\text{kA}$ (8/20 μs)
 IEC/EN/UL Category: Class II / Type 2 / Type 1CA
 Protective Elements: GDT with Thermal Disconnecter
 Housing: Pluggable Design
 Compliance: IEC 61643-11:2011
 EN 61643-11:2012
 UL 1449 4th Edition

Technical Data

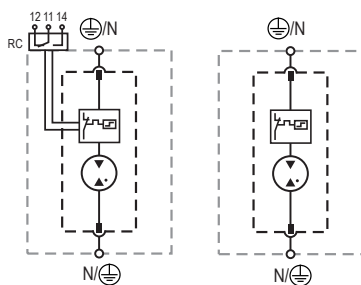
ProTube T2-xxx-0+1(-R)		40
IEC Electrical		
Nominal AC Voltage (50/60Hz)	U_o / U_n	0V
Maximum Continuous Operating Voltage	U_c	305V
Nominal Discharge Current (8/20 μs)	I_n	40kA
Maximum Discharge Current (8/20 μs)	I_{max}	65kA
Voltage Protection Level	U_p	1500V
Follow Current Interrupt Rating	I_{fi}	100 A _{RMS}
Response Time	t_A	< 100 ns
TOV Withstand 200ms	U_T	1200V
Number of Ports		1
UL Electrical		
Maximum Continuous Operating Voltage (AC)	MCOV	305V
Voltage Protection Rating	VPR	1000V
Nominal Discharge Current (8/20 μs)	I_n	20kA
Mechanical & Environmental		
Operating Temperature Range	T_a	-40 °F to +185 °F [-40 °C to +85 °C]
Permissible Operating Humidity	RH	5%...95%
Altitude		13123 ft [4000m]
Terminal Screw Torque	M_{max}	39.9 lbf-in [4.5Nm]
Conductor Cross Section (max)		2 AWG (Solid, Stranded) / 4 AWG (Flexible) 35mm ² (Solid, Stranded) / 25mm ² (Flexible)
Mounting		35 mm DIN Rail, EN 60715
Degree of Protection		IP 20 (built-in)
Housing Material		Thermoplastic: Extinguishing Degree UL 94 V-0
Thermal Protection		Yes
Operating State / Fault Indication		Green Flag / Not Green Flag
Remote Contacts (RC)		Optional
RC Switching Capacity		AC: 250V/1A, 125V/1A; DC: 48V/0.5A, 24V/0.5A, 12V/0.5A
RC Conductor Cross Section (max)		16 AWG (Solid) / 1.5 mm ² (Solid)
Order Information		
Order Code		40
ProTube T2-xxx-0+1		59.0280
ProTube T2-xxx-0+1-R (with remote contacts)		59.0336
ProTube T2-40-P		59.0273

ProTube T2 40 0+1

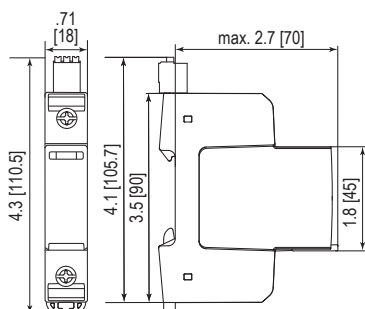
Internal Configuration

Legend

- L Line
- N Neutral
- ⊕ Protective Earth
- RC Remote Contacts Optional



Dimensions & Packaging

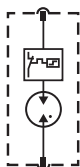


Dimensions & Packaging

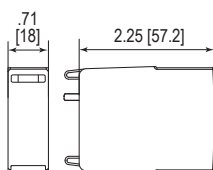
ProTube T2-xxx-0+1		40
Single Unit Weight	pounds	.255
	grams	116
ProTube T2-xxx-0+1-R		40
Single Unit Weight	pounds	.271
	grams	123
Single Unit DIN 43880 Dimension		1 TE
Packaging Dimensions (HxWxL)		4.3 x 4.5 x 13.8" [109 x 115 x 352 mm]
Minimum Order Quantity		12 Units

Plug Internal Configuration

ProTube T2-40-P



Dimensions & Packaging



Dimensions & Packaging

ProTube T2-40-P		40
Single Unit Weight	pounds	.093
	grams	42
Single Unit DIN 43880 Dimension		1 TE
Packaging Dimensions (HxWxL)		3.3 x 4.6 x 12" [83 x 116 x 305 mm]
Minimum Order Quantity		24 Units

inches
[mm]

Information contained in this document is subject to change at any time without notice.

