

DATA SHEET
Pluggable Multi-Pole SPD
ProTec T2 3+1
Class II • Type 2 • Type 1CA


Location of Use: Sub-Distribution Boards
 Network Systems: TT, TN-S
 Mode of Protection: L-N, N-PE
 Surge Ratings: $I_n = 20\text{kA}$ (8/20 μs)
 IEC/EN/UL Category: Class II / Type 2 / Type 1CA
 Protective Elements: High Energy MOV and GDT
 Housing: Pluggable Design
 Compliance: IEC 61643-11:2011
 EN 61643-11:2012
 UL 1449 4th Edition

Technical Data

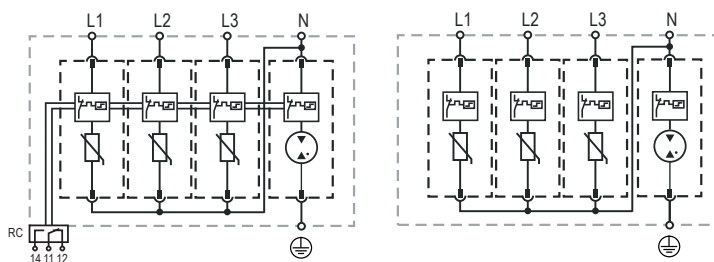
ProTec T2-xxx-3+1(-R)		300	350
IEC Electrical			
Nominal AC Voltage (50/60Hz)	U_o/U_n	240 V	277 V
Maximum Continuous Operating Voltage (AC)	(L-N) U_c	300 V	350 V
	(N-PE) U_c	305 V	305 V
Nominal Discharge Current (8/20 μs)	(L-N)/(N-PE) I_n	20 kA / 40 kA	20 kA / 40 kA
Maximum Discharge Current (8/20 μs)	(L-N)/(N-PE) I_{max}	50 kA / 65 kA	50 kA / 65 kA
Voltage Protection Level	(L-N)/(N-PE) U_p	1500 V / 1500 V	1750 V / 1500 V
Follow Current Interrupt Rating	(N-PE) I_{fi}	100 A _{RMS}	
Response Time	(L-N)/(N-PE) t_A	< 25 ns / < 100 ns	
Back-Up Fuse (max)		315 A / 250 A gG	
Short-Circuit Current Rating (AC)	(L-N) I_{SCCR}	25 kA / 50 kA	
TOV Withstand 5s	(L-N) U_T	337 V	403 V
TOV 120min	(L-N) U_T	442 V	529
	mode	Safe Fail	Safe Fail
TOV Withstand 200ms	(N-PE) U_T	1200 V	
Number of Ports		1	
UL Electrical			
Maximum Continuous Operating Voltage (AC)	(L-N)/(N-PE) MCOV	300 V / 305 V	350 V / 305 V
Voltage Protection Rating	(L-N)/(N-PE) VPR	900 V / 1000 V	1000 V / 1000 V
Nominal Discharge Current (8/20 μs)	(L-N)/(N-PE) I_n	20 kA / 20 kA	
Short-Circuit Current Rating (AC)	(L-N) SCCR	150 kA	200 kA
Mechanical & Environmental			
Operating Temperature Range	T_a	-40 °F to +185 °F [-40 °C to +85 °C]	
Permissible Operating Humidity	RH	5%...95%	
Altitude		13123 ft [4000 m]	
Terminal Screw Torque	M_{max}	39.9 lbf-in [4.5 Nm]	
Conductor Cross Section (max)		2 AWG (Solid, Stranded) / 4 AWG (Flexible)	
		35 mm ² (Solid, Stranded) / 25 mm ² (Flexible)	
Mounting		35 mm DIN Rail, EN 60715	
Degree of Protection		IP 20 (built-in)	
Housing Material		Thermoplastic: Extinguishing Degree UL 94 V-0	
Thermal Protection		Yes	
Operating State / Fault Indication		Green Flag / Not Green Flag	
Remote Contacts (RC)		Optional	
RC Switching Capacity		AC: 250V/1A, 125V/1 A; DC: 48V/0.5 A, 24V/0.5 A, 12V/0.5 A	
RC Conductor Cross Section (max)		16 AWG (Solid) / 1.5 mm ² (Solid)	
Order Information			
Order Code		300	350
ProTec T2-xxx-3+1		59.0121	59.0123
ProTec T2-xxx-3+1-R (with remote contacts)		59.0122	59.0124
ProTec T2-xxx-P		59.0065	59.0066
ProTube T2-40-P		59.0273	59.0273

ProTec T2 3+1

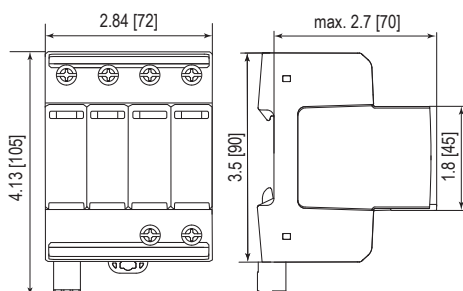
Internal Configuration

Legend

- L Line
- N Neutral
- ⊕ Protective Earth
- RC Remote Contacts Optional



Dimensions & Packaging

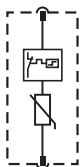


Dimensions & Packaging

		300	350
ProTec T2-xxx-3+1	Single Unit Weight	pounds 1.052	1.085
		grams 477	492
ProTec T2-xxx-3+1-R	Single Unit Weight	pounds 1.072	1.105
		grams 486	501
Single Unit DIN 43880 Dimension		4 TE	
Packaging Dimensions (HxWxL)		4.3 x 4.5 x 13.8" [109 x 115 x 352 mm]	
Minimum Order Quantity		4 Units	

Plug Internal Configuration

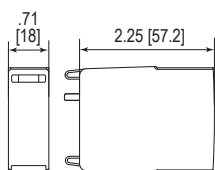
ProTec T2-xxx-P



ProTube T2-40-P



Dimensions & Packaging



Dimensions & Packaging

		300	350
ProTec T2-xxx-P	Single Unit Weight	pounds .135	.146
		grams 61	66
ProTube T2-40-P	Single Unit Weight	pounds .093	.105
		grams 42	47
Single Unit DIN 43880 Dimension		1 TE	
Packaging Dimensions (HxWxL)		3.3 x 4.6 x 12" [83 x 116 x 305 mm]	
Minimum Order Quantity		24 Units	

inches
[mm]

Information contained in this document is subject to change at any time without notice.



Raycap

www.raycap.com

© 2018 Raycap All rights reserved.
G29-00-403 180216