

Pluggable Single-Pole SPD
ProTec T2 1+0
 Class II • Type 2 • Type 1CA



Location of Use: Sub-Distribution Boards
 Network Systems: TN-S, TN-C, TT (only L-N)
 Mode of Protection: L-PE, N-PE (only TN-S), L-PEN, L-N
 Surge Ratings: $I_n = 20\text{ kA}$ (8/20 μs)
 IEC/EN/UL Category: Class II / Type 2 / Type 1CA
 Protective Elements: High Energy MOV
 Housing: Pluggable Design
 Compliance: IEC 61643-11:2011
 EN 61643-11:2012
 UL 1449 4th Edition

Technical Data

ProTec T2-xxx-1+0(-R)		75	150	300	350	480	750
IEC Electrical							
Nominal AC Voltage (50/60Hz)	U_o/U_n	60V	120V	240V	277V	400V	600V
Maximum Continuous Operating Voltage (AC)	U_c	75V	150V	300V	350V	480V	750V
Nominal Discharge Current (8/20 μs)	I_n	20 kA	20 kA	20 kA	20 kA	20 kA	20 kA
Maximum Discharge Current (8/20 μs)	I_{max}	50 kA	50 kA	50 kA	50 kA	50 kA	35 kA
Voltage Protection Level	U_p	800V	1250V	1500V	1750V	2300V	3400V
Response Time	t_A	< 25ns					
Back-Up Fuse (max)		315 A / 250 A gG					
Short-Circuit Current Rating (AC)	I_{SCCR}	25 kA / 50 kA					
TOV Withstand 5s	U_T	114V	229V	337V	403V	581V	871V
TOV 120min	U_T	114V	229V	442V	529V	762V	1143V
	mode	Withstand	Withstand	Safe Fail	Safe Fail	Safe Fail	Safe Fail
Number of Ports		1					

UL Electrical							
Maximum Continuous Operating Voltage (AC)	MCOV	75V	150V	300V	350V	480V	750V
Voltage Protection Rating	VPR	330V	600V	900V	1000V	1500V	2500V
Nominal Discharge Current (8/20 μs)	I_n	20 kA	20 kA	20 kA	20 kA	20 kA	20 kA
Short-Circuit Current Rating (AC)	SCCR	100 kA	200 kA	150 kA	200 kA	200 kA	200 kA

Mechanical & Environmental							
Operating Temperature Range	T_a	-40 °F to +185 °F [-40 °C to +85 °C]					
Permissible Operating Humidity	RH	5%...95%					
Altitude		13123 ft [4000m]					
Terminal Screw Torque	M_{max}	39.9 lbf-in [4.5Nm]					
Conductor Cross Section (max)		2 AWG (Solid, Stranded) / 4 AWG (Flexible) 35 mm ² (Solid, Stranded) / 25 mm ² (Flexible)					
Mounting		35 mm DIN Rail, EN 60715					
Degree of Protection		IP 20 (built-in)					
Housing Material		Thermoplastic: Extinguishing Degree UL 94 V-0					
Thermal Protection		Yes					
Operating State / Fault Indication		Green Flag / Not Green Flag					
Remote Contacts (RC)		Optional					
RC Switching Capacity		AC: 250V/1A, 125V/1A; DC: 48V/0.5A, 24V/0.5A, 12V/0.5A					
RC Conductor Cross Section (max)		16 AWG (Solid) / 1.5 mm ² (Solid)					

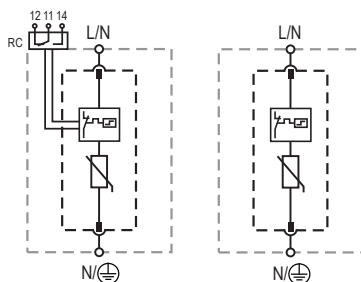
Order Information							
Order Code		75	150	300	350	480	750
ProTec T2-xxx-1+0		59.0069	59.0071	59.0073	59.0075	59.0077	59.0079
ProTec T2-xxx-1+0-R (with remote contacts)		59.0070	59.0072	59.0074	59.0076	59.0078	59.0080
ProTec T2-xxx-P		59.0063	59.0064	59.0065	59.0066	59.0067	59.0068

ProTec T2 1+0

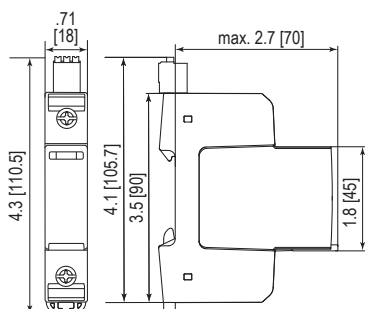
Internal Configuration

Legend

- L Line
- N Neutral
- ⊕ Protective Earth
- RC Remote Contacts Optional



Dimensions & Packaging



Dimensions & Packaging

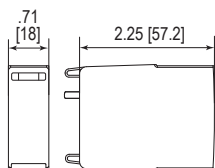
		75	150	300	350	480	750	
ProTec T2-xxx-1+0	Single Unit Weight							
		pounds	.258	.267	.283	.294	.305	.340
		grams	117	121	128	133	138	154
ProTec T2-xxx-1+0-R	Single Unit Weight							
		pounds	.274	.283	.298	.309	.320	.355
		grams	124	128	135	140	145	161
Single Unit DIN 43880 Dimension		1 TE						
Packaging Dimensions (HxWxL)		4.3 x 4.5 x 13.8" [109 x 115 x 352 mm]						
Minimum Order Quantity		12 Units						

Plug Internal Configuration

ProTec T2-xxx-P



Dimensions & Packaging



Dimensions & Packaging

		75	150	300	350	480	750	
ProTec T2-xxx-P	Single Unit Weight							
		pounds	.111	.120	.135	.146	.157	.192
		grams	50	54	61	66	71	87
Single Unit DIN 43880 Dimension		1 TE						
Packaging Dimensions (HxWxL)		3.3 x 4.6 x 12" [83 x 116 x 305 mm]						
Minimum Order Quantity		24 Units						

inches
[mm]

Information contained in this document is subject to change at any time without notice.



Raycap

www.raycap.com

© 2018 Raycap All rights reserved.
G29-00-398 180216